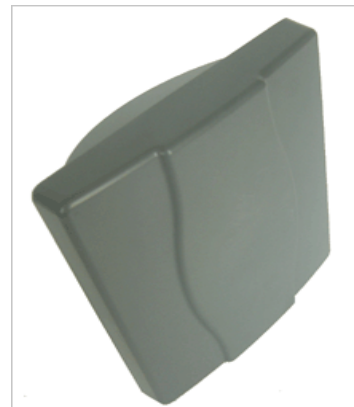


OSBRIDGE

OSBRIDGE 24XLG/24XLGi Technical Specifications



Interface													
Ethernet Interface	100 base-T Ethernet (RJ-45) with POE												
Wired LAN Protocol	IEEE 802.3 (CSMA/CD)												
Wireless Interface													
	OSBRIDGE 24XLGi	Integrated 10dBi Panel Antenna, V or H Polarized											
	OSBRIDGE 24XLG	N Female Connector											
Wireless LAN Protocol	IEEE 802.11b/g, WPM (Wireless Polling MAC)												
Radio													
Supported Frequencies <small>(User Configurable)</small>	Europe (ETSI): 13 Channels (2412-2472 MHz) USA (FCC): 11 Channels (2412-2462 MHz) Africa&Asia (OTHER): 38 Channels (2312-2502 MHz, 5 MHz step)												
Modulation Technique	BPSK, QPSK, 16QAM, 64QAM												
Channel Width	User Selectable – 20 MHz, 10 MHz or 5 MHz												
Media Access Protocol	CMA/CA (Collision Avoidance) with ACK												
Output Power	ETSI						FCC						
OSBRIDGE 24XLGi	≤+20 dBm EIRP						≤+26 dBm EIRP						
OSBRIDGE 24XLG	≤+12 dBm at N connector						≤+18 dBm at N connector						
Data Rate (Mbps)	54	48	36	24	18	12	11	9	6	5.5	2	1	
Typical Receive Threshold													
OSBRIDGE 24XLGi (dBm) <small>(including integrated antenna)</small>	-83	-84	-86	-88	-91	-93	-96	-95	-101	-102	-103	-106	
OSBRIDGE 24XLG (dBm)	-72	-73	-75	-77	-80	-82	-85	-84	-90	-91	-92	-97	
System													
Processor	Atheros AR2316 MIPS												
Memory	4MB FLASH, 16MB SDRAM												
RF Module	AR2316												
Physical													
Dimensions	140 mm X 195 mm X 70 mm												
Operating / Storage Temperature	-40°C - +60°C / -40°C - +75°C												
Enclosure	Outdoor Mountable, Weather Protected												
Power Adapter	Included 12V/1.2A DC, Active Ethernet (Power over Ethernet injector included)												
LEDs	3 – Power, Ethernet LAN Activity, Wireless Activity												
Dedicated External Antennas													
Model	Type												
OSBRIDGE 24XLG	- AS-11	11 dBi 120° Horizontal Polarized Sector Antenna											
	- AS-9	9.5 dBi 180° Vertical Polarized Sector Antenna											
	- AD-1	11 dBi 360° Horizontal Polarized Omni Antenna											
Software													
Key Features	- Wireless Operating Modes: Access Point, Access Point Client, Polling Base/Client						- MAC address filtering						
	- IP Operating Modes: Bridge, Router, NAT Router						- Inter-Client traffic disable						
	- Independent Uplink/Downlink Traffic Shaping based on MAC address, IP address or whole IP Subnet						- Hardware Watchdog to ensure uninterrupted operation						
	- Built in powerful firewall that allows filtering traffic based on MAC address, IP address, Port or Protocol						- DHCP Client and Server						
	- Link Quality reporting						- User selectable Fragmentation / RTS threshold						
	- Built in PPPoE client						- Extensive link statistics						
Regulatory Compliance													
OSBRIDGE 24XLGi	CE mark, ETSI EN 300 328 compliant, FCC Part 15 Compliant												
OSBRIDGE 24XLG	CE mark, ETSI EN 300 328 compliant, FCC Part 15 Compliant												
Warranty													
	One year, limited												

Contact Information:

WiNet - Komunikacja Bez Granic
ul. Czestochowska 25
62-800 KALISZ
Poland

tel. +48-62-5024526
 fax. +48-62-5024526
 sales e-mail: sprzedaz@winet.com.pl
 technical enquiries: info@winet.com.pl